

System of Care Core Values

1 Community Based

An array of services and supports that includes both home- and community-based treatment services and supports.

1



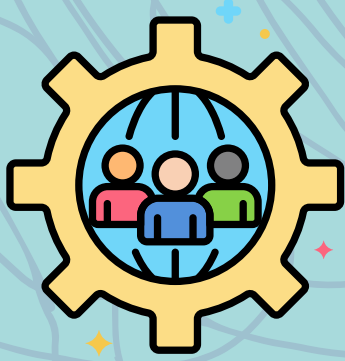
2

2 Family Driven

Families have a primary decision-making role in the care of their own children as well as the policies and procedures governing care for all children in their communities, states, tribes, territories, and nation.

3 Youth Guided

Young people have the right to be empowered, educated, and given a decision-making role in the care of their own lives as well as the policies and procedures governing the care of all youth in the community, state, and nation.



3

3 Culturally & Linguistically Competent

A concept that reflects an integrated pattern of beliefs, values, practices, customs, rituals, and attitudes that make up an individual, family, organization or community. And the capacity of an organization to communicate effectively to diverse populations.

